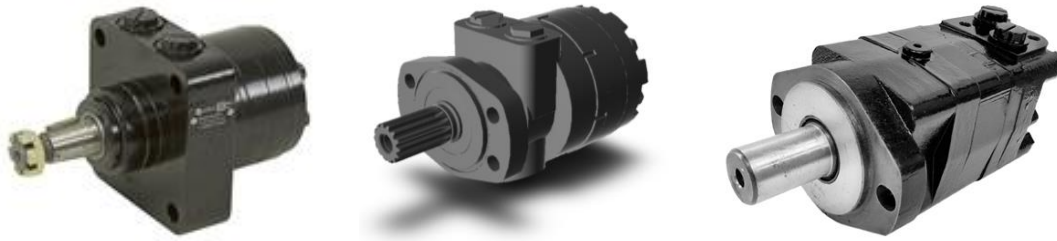


# Orbital Motors – Low Speed High Torque (LSHT)



Distribution Type	Model	Displacement (cm <sup>3</sup> /rev)	Int. Operating Pressure		Int. Speed Range (rpm)	Crossover/Note
			(Mpa)	(psi)		
Axial Distribution (Gerotor)	BMM	8-50	14	2,030	500-2450	Char-Lynn 129-xxxx, Danfoss OMM
	BMP	36-500	16.5	2,390	150-1650	Char-Lynn 101-xxxx
	OZ	36-400	14	2,030	104-1080	
	BMR	36-375	20	2,900	190-1520	Char-Lynn 103-xxxx
	BMR-BK01	50-375	20	2,900	190-600	Hyd motor with Brake
	OK	36-375	14	2,030	160-1100	
	BMH	200-500	20	2,900	185-440	Danfoss OMH
Disc Distribution (Geroler)	BMSY	80-475	27.5	3,990	185-985	Char-Lynn 104-xxxx, Bearingless option
	BMT	160-800	24	3,480	185-780	Char-Lynn 4000 Series, Bearingless option
	BMV	315-1000	24	3,480	240-630	Danfoss OMV
	BMK2	65-475	31	4,500	230-990	
	BMK6	200-1000	30	4,350	230-865	Char-Lynn 6000 Series
	BME2	65-375	19	2,760	200-840	
	BMJ	65-375	19	2,760	200-840	
	BMER	125-750	24	3,480	120-490	White 500/501, 520/521, 530/531

*Axial distribution - more economical, lower performance (ie. swing drives, positioning)*

*Disc distribution - more expensive, higher performance (ie. auger drives, wheel motors, high inertia swing drives)*

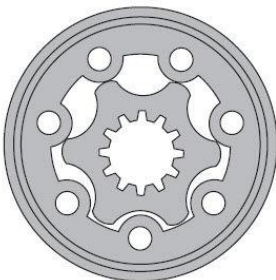


Figure 1: Gerotor cross section

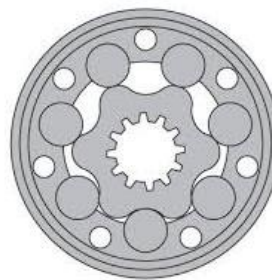
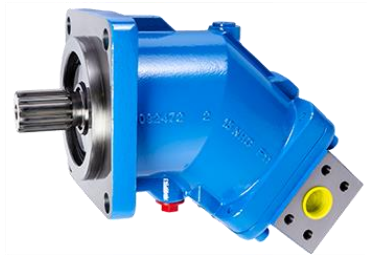


Figure 2: Geroler cross section

# Axial Piston Motors



Fixed/Variable	Model	Max Displacement (cm <sup>3</sup> /rev)	Int. Operating Pressure		Int. Speed Range (rpm)	Crossover/Note
			(Mpa)	(psi)		
Fixed Displacement	A2FE	55-160	35	5,080	2650-3750	Rexroth A2F
	MA	10-180	45	6,530	4000-8800	SAE mount
	MSI	28-125	45	6,530	4500-6900	Cartridge mount
	SCM SAE	10-130	40	5,800	4600-8250	SAE mount
	SCM M2	25-108	40	5,800	5200-7000	Cartridge mount
Variable displacement	A6VE	55-160	35	5,080	3500-5000	Rexroth A6VE
	AG-35	35	30	4,350	5000	Danfoss LC 35, 15cc min
	HM3V38	38-45	41	5,950	5200	Danfoss LC 38 & 45
	MSI2C45	45	40	5,800	4500	Danfoss LC 45, 17cc min